

Characteristics / Ordering Code

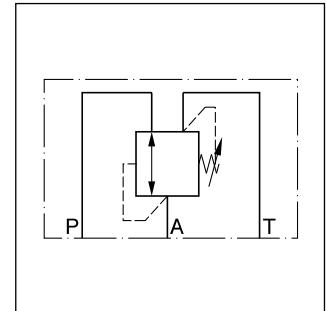
Direct operated pressure reducing valve with manual adjustment. Series VM is a direct operated, spring loaded 3-way pressure reducing valve, that is open in neutral position. The valve closes the connection when the pre-set pressure is exceeded.

- Primary port: NG06 - P
- Secondary port: NG06 - A
- Tank port: NG06 - T

If the pressure increases due to an external influence the spool opens to port T until the pre-set pressure is reached.



NG06



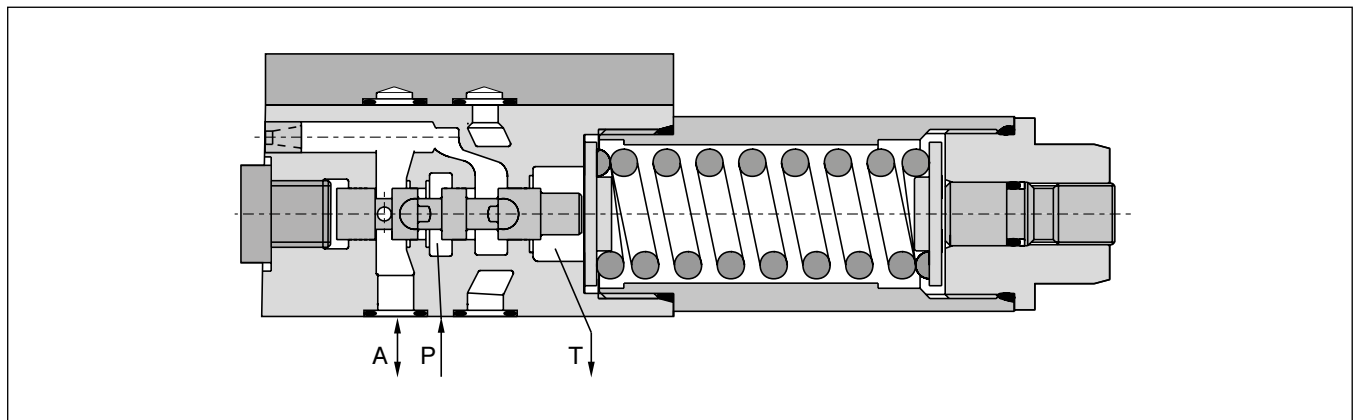
NG06

4

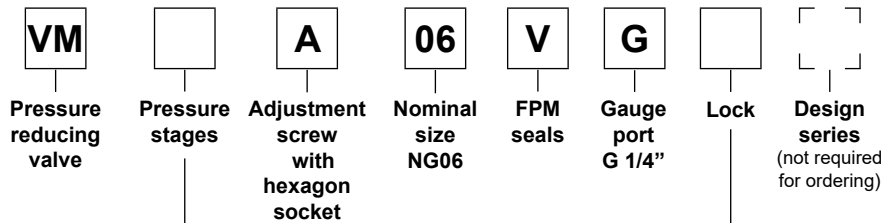
Features

- Spool type valve
- Subplate mounting acc. to ISO 5781
- 5 pressure stages
- 2 adjustment modes

NG06



Ordering code



Code	Pressure stages
025	up to 25 bar
064	up to 64 bar
160	up to 160 bar
210	up to 210 bar
350	up to 350 bar

Code	Lock
omit	-
Z	Key lock

Bold letters = Short-term availability

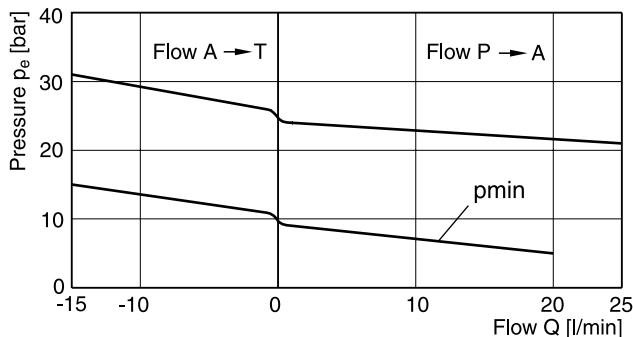
Technical data

General			
Design	Pressure reducing valve, direct operated, spool type		
Nominal size	NG06 (CETOP 03 / NFPA D03)		
Interface	Subplate mounting according to ISO 5781		
Mounting position	unrestricted		
Ambient temperature	[°C]	-20...+60	
MTTF _D value	[years]	150	
Weight	[kg]	1.3	
Hydraulics			
Max. operating pressure	[bar]	Port P and A 350 Port T depressurized	
Pressure stages	[bar]	25; 64; 160; 210; 350	
Nominal flow	[l/min]	25	
Fluid	Hydraulic oil according to DIN 51524		
Fluid temperature	[°C]	-20...+70	
Viscosity	permitted	[cSt]/ [mm ² /s]	20...400
	recommended	[cSt]/ [mm ² /s]	30...80
Filtration	ISO 4406; 18/16/13		

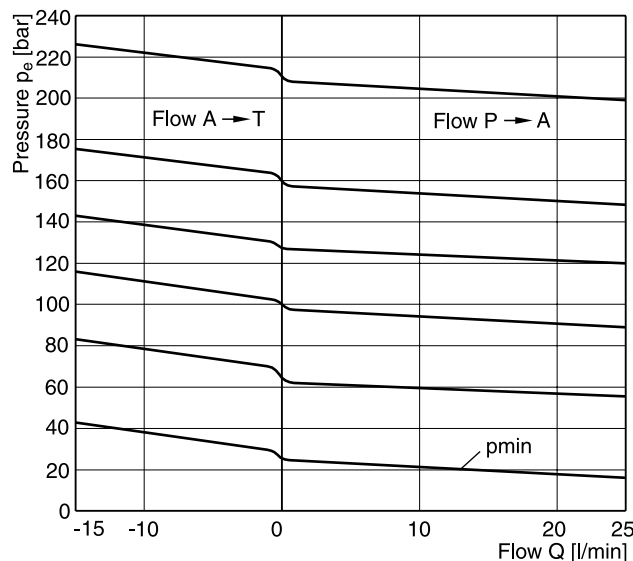
4

Characteristic Curves

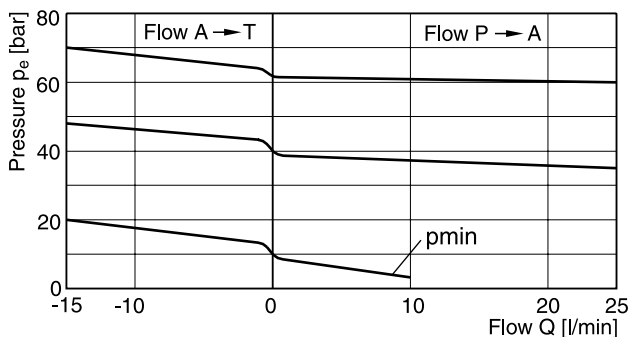
Setting pressure max. 25 bar



Setting pressure max. 160 or 210 bar



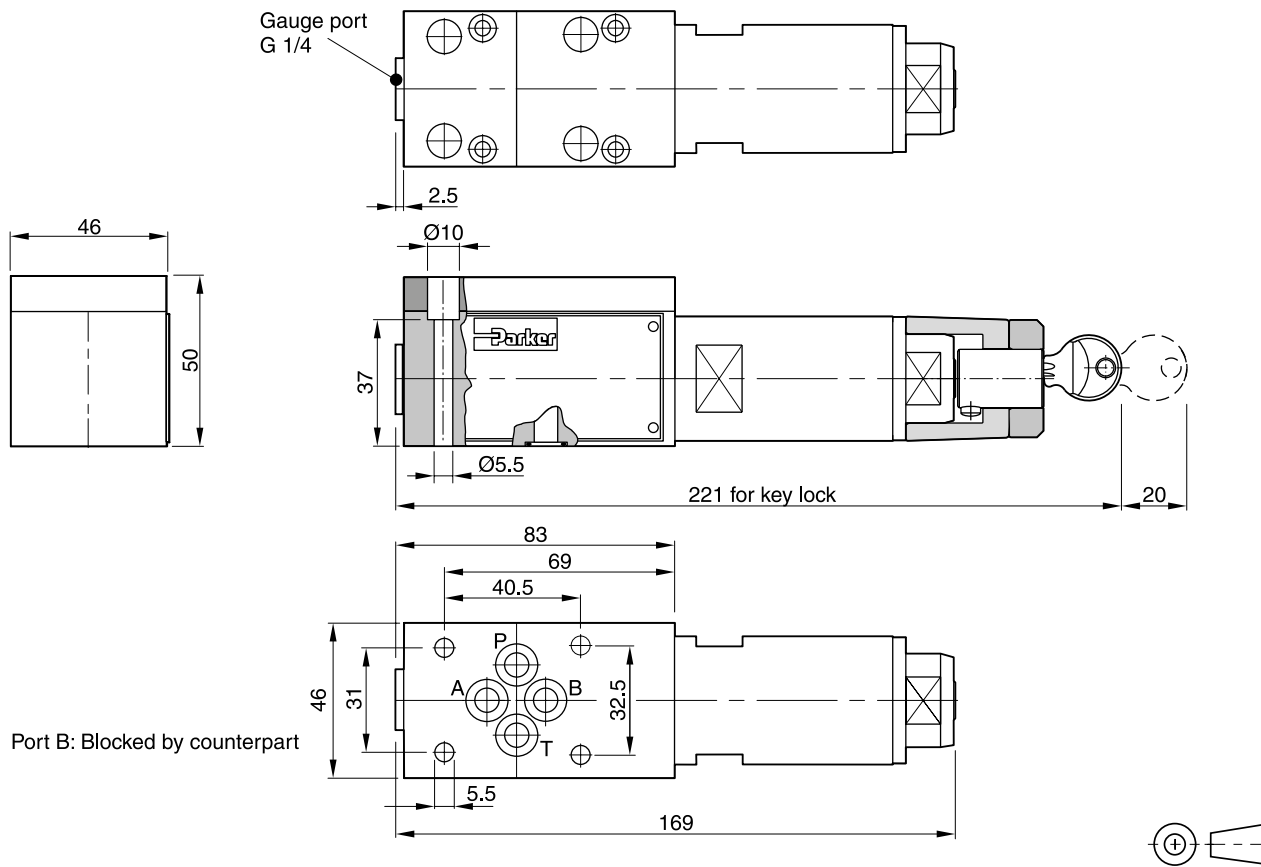
Setting pressure max. 64 bar




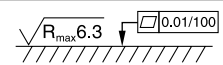


All characteristic curves measured with HLP46 at 50 °C.

NG06

4



Surface finish	Bolt kit			 Kit FPM
	BK443	4x M5x45 ISO 4762-12.9	7.6 Nm ±15 %	SK-VB/VM/VS-A06V

Mounting pattern ISO 5781-03-04-00

